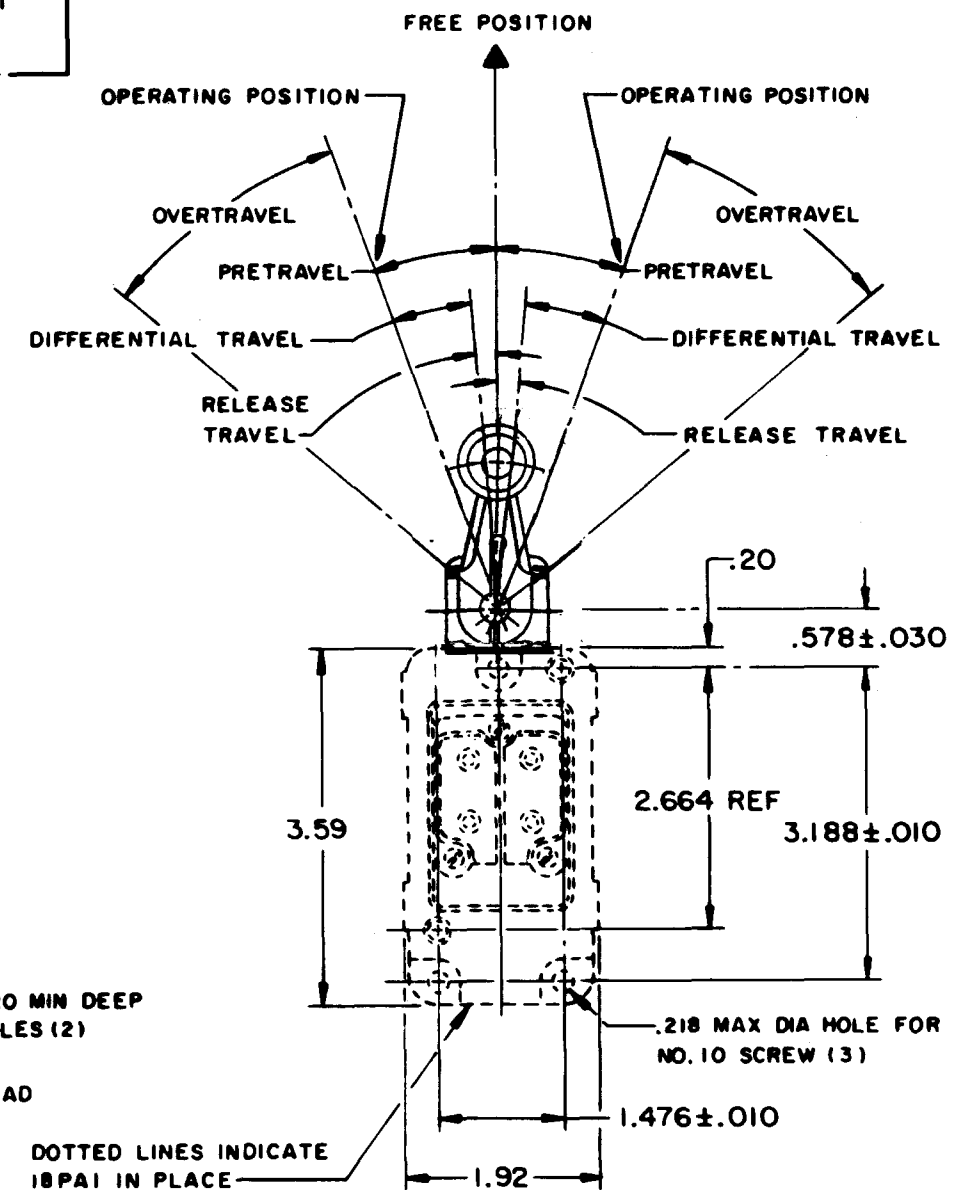
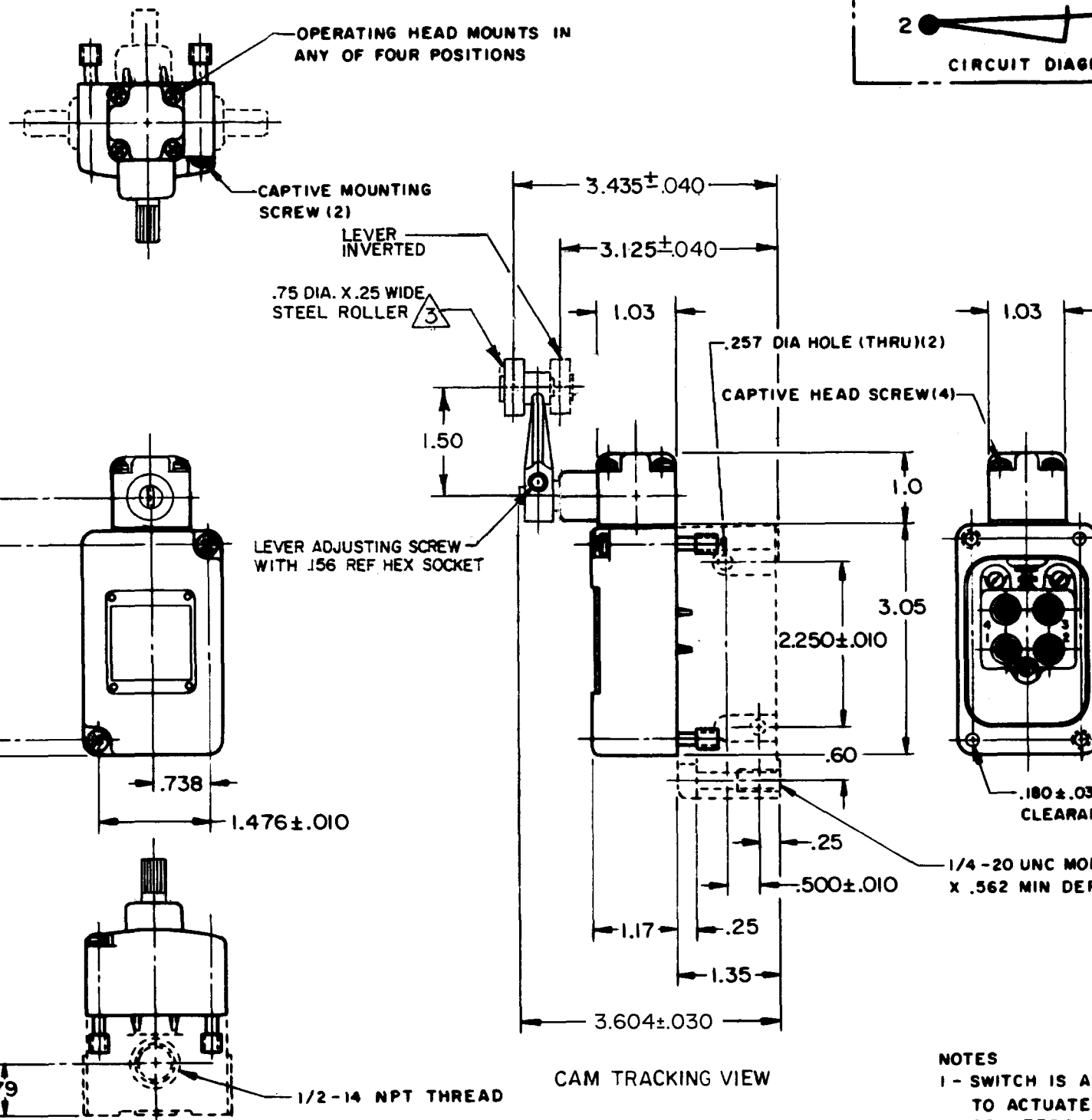
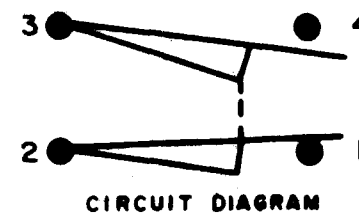


**SWITCH - ENCLOSED**

CATALOG LISTING  
**201LS1**



**NOTES**

- 1 - SWITCH IS ASSEMBLED FOR ACTUATION IN BOTH DIRECTIONS BUT MAY BE ADJUSTED TO ACTUATE IN EITHER THE CLOCKWISE DIRECTION ONLY OR THE COUNTERCLOCKWISE DIRECTION ONLY
- 2 - TO CONVERT SWITCH FOR ACTUATION IN EITHER THE CLOCKWISE OR COUNTERCLOCKWISE DIRECTION ONLY, REMOVE ACTUATOR HEAD AND ROTATE THE NOTCHED PLUNGER 90° TO THE RIGHT FOR CLOCKWISE ACTUATION OR 90° TO THE LEFT FOR COUNTERCLOCKWISE ACTUATION
- 3 - ROLLER LEVER MAY BE LOCKED IN ANY POSITION THRU 360°
- 4 - LEVER FURNISHED UNASSEMBLED IN UNIT PACKING BOX

THIS DRAWING COVERS A PROPRIETARY ITEM AND IS THE PROPERTY OF MICRO SWITCH, A DIVISION OF MINNEAPOLIS-HONEYWELL REGULATOR CO. THIS DRAWING IS NOT TO BE COPIED OR USED WITHOUT THE APPROVAL OF MICRO SWITCH.

CHARACTERISTICS	ELECTRICAL DATA	SCALE 1/2 TO 1
OPERATING TORQUE --- -4.5 IN-LB MAX	CONTACT ARRANGEMENT (SEE CIRCUIT DIAGRAM)	DO NOT SCALE PRINT
FULL OVERTRAVEL TORQUE --- -6 IN-LB MAX	10A-120, 240, OR 480 VAC; 1/3 HP - 120 VAC	UNLESS OTHERWISE NOTED
RELEASE TORQUE --- -.75 IN-LB MIN	3/4 HP - 240 VAC; 0.8A - 115 VDC; 0.4A - 230 VDC	DIMENSIONS ARE IN INCHES
PRETRAVEL --- -20° MAX	.1A - 550 VDC	<b>TOLERANCES ARE:</b>
DIFFERENTIAL TRAVEL --- -12° MAX	PILOT DUTY: 600 VAC MAX	ONE PLACE (.01) ± .030
OVERTRAVEL --- -30° MIN		TWO PLACE (.001) ± .015
RELEASE TRAVEL --- -4° MIN		THREE PLACE (.000) ± .008
SWITCH-BASIC REPLACEMENT --- -2 MNG		ANGLES ±
		WEIGHT

CATALOG LISTING 201LS1 PAGE 1 OF 1  
 DRAWING NUMBER M  
 ISSUE 15  
 REVISIONS  
 A CO-95463-B 6 L T 7 SEP 99  
 B ECO-200178 5 APR 00  
 CHECK 28 MAR 64  
 DRAWN 19 MAR 64  
 FORMTEK FO-80378-003  
 O M W